



Directions

Contact

125 Hoe Street
London
E17 4RX

E: lettings@hcolondon.com

T: 02085 210 755

hcolondon.com



0 Bed
Office
located in Broomfield



Unit 3 189 Main
Road
Broomfield
Chelmsford
CM1 7AU

£800



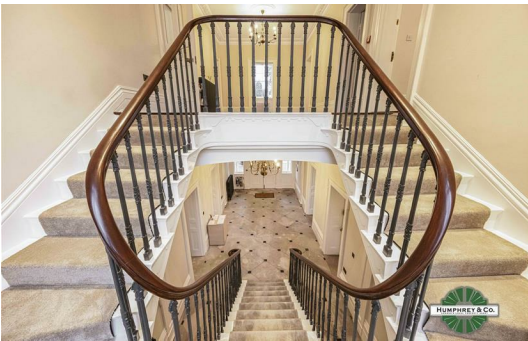
OFFICE SPACES AVAILABLE --- PRICES CAN VARY DEPENDING ON SIZE (£800 - £1500) --- ALL BILLS INCLUDED --- 12 MONTHS TO 5 YEARS LEASES --- AVAILABLE FROM MID FEBRUARY --- BEAUTIFUL PROFESSIONAL LOCATION

Nestled in the heart of Broomfield Place, Chelmsford, these office spaces at 189 Main Road presents an excellent opportunity for businesses seeking a prime location. The spaces offer immense potential for creative use and development.

Broomfield Place is known for its vibrant community and accessibility, making it an ideal spot for professionals looking to establish or expand their business. The surrounding area boasts a variety of amenities, including shops, cafes, and transport links, ensuring that both clients and employees will find it convenient.

This office space is perfect for those who wish to create a bespoke working environment tailored to their specific needs. With the right vision, this property can be transformed into a dynamic workspace that fosters productivity and innovation.

If you are looking for a strategic location to set up your office in Chelmsford, this property offers a blank canvas ready for your ideas. Do not miss the chance to explore the possibilities that await at 189 Main Road.



Energy Efficiency Rating

	Current	Potential
Very energy efficient - lower running costs		
(92 plus) A		
(81-91) B		
(69-80) C		
(55-68) D		
(39-54) E		
(21-38) F		
(1-20) G		
Not energy efficient - higher running costs		

England & Wales

EU Directive 2002/91/EC

Google

Map data ©2026

